

Northern Tallgrass Prairie National Wildlife Refuge

The goal of the refuges is to conserve, restore, manage and enhance the fragmented northern tallgrass and aspen parkland ecosystems and their associated native fish and wildlife populations.

These refuges provide public areas for compatible wildlife dependent uses, emphasizing increased understanding of the project.

Partnerships with landowners, communities, foundations, local and state government, and educational institutions are developed to protect the biological heritage of our prairie.

Originally the Northern Tallgrass Prairie included some 25 million acres. The remnant Northern Tallgrass Prairie is approximately 300,000 acres. The goal of the protected Northern Tallgrass Prairie Refuge is to save and preserve approximately 77,000 acres.

TOUCH THE SKY PRAIRIE thru the BRANDENBURG PRAIRIE FOUNDATION provide over 1,000 acres to reach that goal!



Beaver Creek Falls
Prairie Waterfall Trail

Blooming Plant Brochures are available in the kiosks from May through September



FRINGED PRAIRIE ORCHID
This endangered prairie flower was first discovered by Jim Brandenburg on the prairie in July 2010.

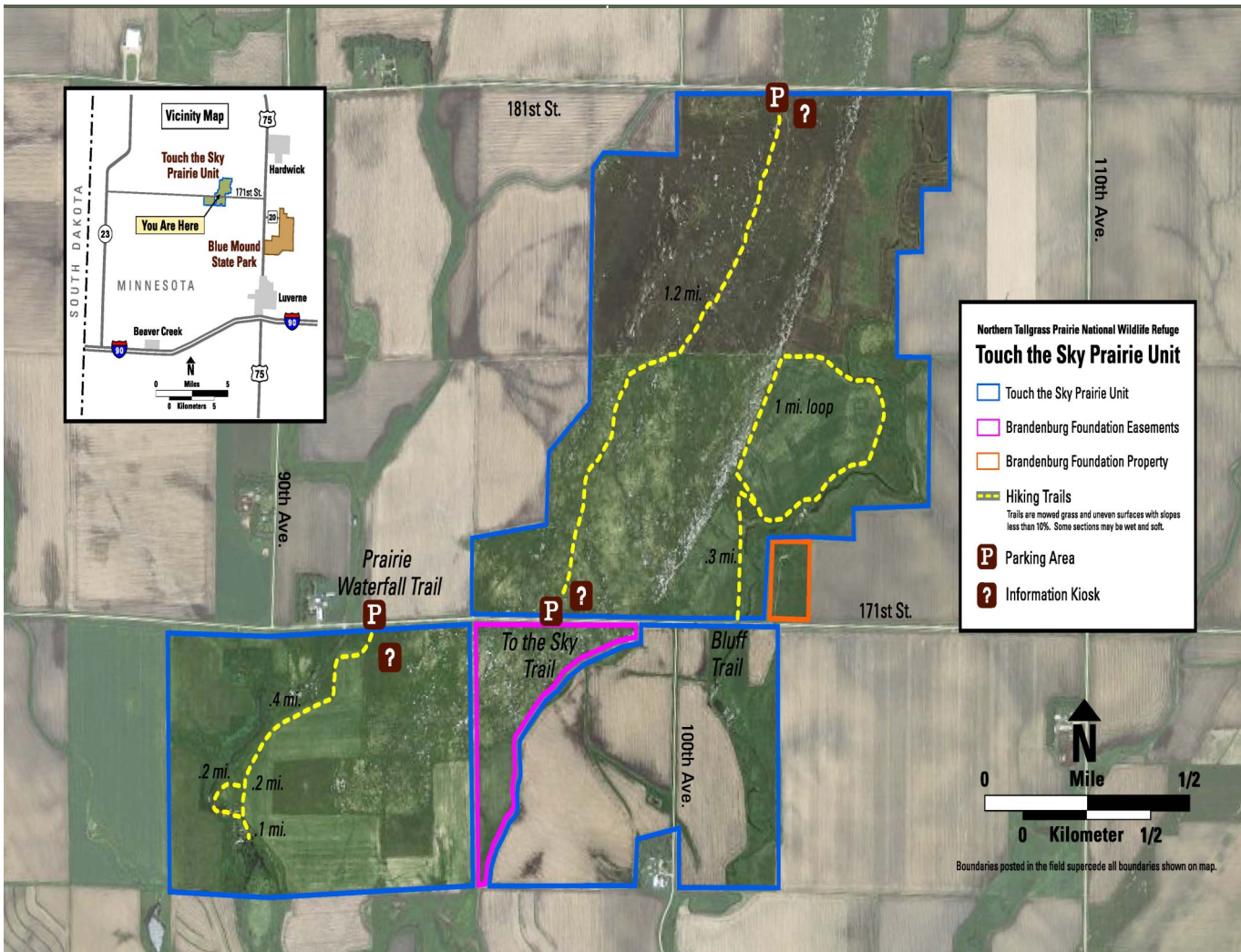


Touch the Sky Prairie



BRANDENBURG

PRAIRIE FOUNDATION And US FISH & WILDLIFE



THE FOUNDATION

A new hope was born in 1999 when the Brandenburg Gallery opened in Luverne, Passion and commitment to nature is the foundation of Jim Brandenburg's career.

In opening the gallery, Jim and Judy Brandenburg joined a group of local champions to establish the Brandenburg Prairie Foundation. Proceeds from the gallery, donations and fundraising are used to support the Foundation's mission:

THE MISSION

TO EDUCATE, PROMOTE, PRESERVE, AND EXPAND NATIVE PRAIRIE IN SOUTHWEST MINNESOTA

"Touch the Sky Lightning Cloud"



Jim Brandenburg