

All artists are responsible for complying to the Minnesota Sales and Use Tax Rules and Regulations.

No generators are allowed in the art booths.

Income from the sales of all art is the property of the artists.

SERVICES

Reserved parking spaces will be assigned to exhibitors.

\$5 lunch vouchers will be provided for artists.

APPLICATION PROCEDURE

Complete the enclosed registration form.

Submit check made out to the Luverne Area Chamber for the total of the jury fee (\$10) and booth registration fee (\$55 or \$85).

Applications will not be processed without complete payment.

Sign the written agreement/contract.

Submit three (3) different jpeg files illustrating your art on a disk. (The disk will not be returned.) (Limit each file to 2 MB.) Slides of work with also be accepted. Slides will be returned day of event.

DATES TO REMEMBER

APPLICATION POSTMARK DEADLINE – July 2, 2010

NOTIFICATION OF ACCEPTANCE – within 2 weeks of receipt of application

DATE OF SHOW – SATURDAY, AUGUST 28, 2010

QUESTIONS: Luverne Area Chamber,

213 E. Luverne St.,

Luverne, MN 56156.

Ask for Jane Wildung Lanphere or Lorna Bryan

Toll Free at 888 283-4061

Email at : luvernechamber@co.rock.mn.us



4th Annual ART ROCKS Juried Fine Arts Festival

**Saturday,
August 28,
2010**



Rock County
Courthouse
Square

THE ART ROCKS EVENT

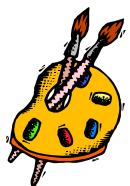
We invite you to the **2010 Art Rocks held on Saturday, August 28, 2010, at the Rock County Courthouse Square.** Art Rocks is a festival honoring the fine arts and creative artists like you! **EVENT HOURS - 9:00 a.m. until 4:00 pm**

ATTENDANCE

Last years attendance at the event was outstanding for patrons and artists. 2000 patrons visited the new Art Rocks venue with rave reviews!

ELIGIBILITY

- Participation is open to artists and craftsmen who produce visual works of art or crafts of original concept, design and execution.
- Work produced from molds or kits, consigned or commercially manufactured items, product completely assembled from commercially produced materials, or items deemed inappropriate by the committee are not permitted.
- No agents or representatives of artists are permitted without prior consent of the Art Rocks Committee.
- All artists must be present during the festival.
- Commercially silk-screened sweat/tee shirts are generally not acceptable. Appliqued sweat/tee shirts not exhibiting originality or handcrafted quality are generally not acceptable.
- Prints of original artwork are acceptable. Preference will be given to limited first edition prints (500 copies or less).



JURY PROCESS

The Art Rocks Jury Panel represents a cross section of art perspectives. In choosing the show's participants, the jury will look for quality, originality, and consistency of design. The Panel reserves the right to balance the show according to media.

ALL ARTWORK WILL BE JURIED ON THE BASIC CRITERIA OF: ORIGINALITY - CRAFTSMANSHIP - CRAFTSMANSHIP - SKILLFUL USE OF MATERIALS.

Media categories are: jewelry, leather, metal, furniture, glass, graphics, photography, Pottery/ceramic, sculpture, mixed media, textiles/fibers and painting.

THE JURY FEE OF \$10 IS NON-REFUNDABLE and must accompany every application. *A separate application & fee must be filled out for each category entered!* Applications

will be juried in within two weeks of receipt of application.

AWARDS

Art Rocks will recognize artists who are achieving excellence in their field. Awards presented will be: Best of Show for \$250, Best 3D for \$100, Best 2 D for \$100, Patron's Award for \$100 and 4 Merit Awards.

EXHIBITOR'S RESPONSIBILITIES

- Exhibitors will be assigned a designated space of 12 foot by 12 foot. Two artists may share a booth (shared booth cost - \$85/space). Storage spaces will be assigned behind your booth of 4 feet. Artists must provide their own display units, tables, chairs and canopies. (Tables and chairs are available to rent for your convenience.)
- **APPLICATIONS WILL NOT BE PROCESSED WITHOUT PAYMENT!** Booth space is non-transferable.
- Check-in time, booth location, event details, local community/motel information will be mailed prior to the event,

Make your plans and reservations early! Make "ART ROCKS" in Luverne, August 28th

FEES

- Jury Fee - \$10 per category, the fee is non-refundable.
- Booth Fee - \$55 per space for individual, \$85 per space for booth's shared
- Cancellations - Cancellations postmarked before July 20th, will receive booth money back less a processing fee of \$5.
- **APPLICATIONS WILL NOT BE PROCESSED WITHOUT PAYMENT!**
- **DEADLINE FOR APPLICATIONS—JULY 2, 2010!**

RULES

- No pets allowed!
- All booths must open at 9 am and remain open until closing (4 pm).
- Art must be consistent with the images provided. Exhibited work may be reviewed by the committee during the show. If work is inconsistent with juried images provided, the committee may demand the artist leave the show. Committee decisions are final.
- All art must be for sale and all transactions completed by the artist and/or their representatives.

All booths must be prepared for inclement weather.

CHECK OUT OUR WEBSITE: www.luvernechamber.com

